



How to create a **PSE EASy** account

A screenshot of the PSE EASy login and registration interface. The interface is displayed within a light blue rounded rectangle. At the top, the PSE EASy logo is shown, consisting of a stylized blue 'P' and 'E' followed by the text 'PSE EASy'. Below the logo, the text 'EASy Electronic Allocation System' is displayed. A white input field with a user icon and the text 'Enter User Id' is positioned below the title. Underneath the input field are two blue buttons: 'LOGIN' and 'REGISTER'. At the bottom, there is a checkbox and the text 'I have read, understood and agree to the Terms of Use'.

What is **PSE Easy**

PSE EASY is the online version of the Philippine Stock Exchange's IPO subscription platform for local small investors.

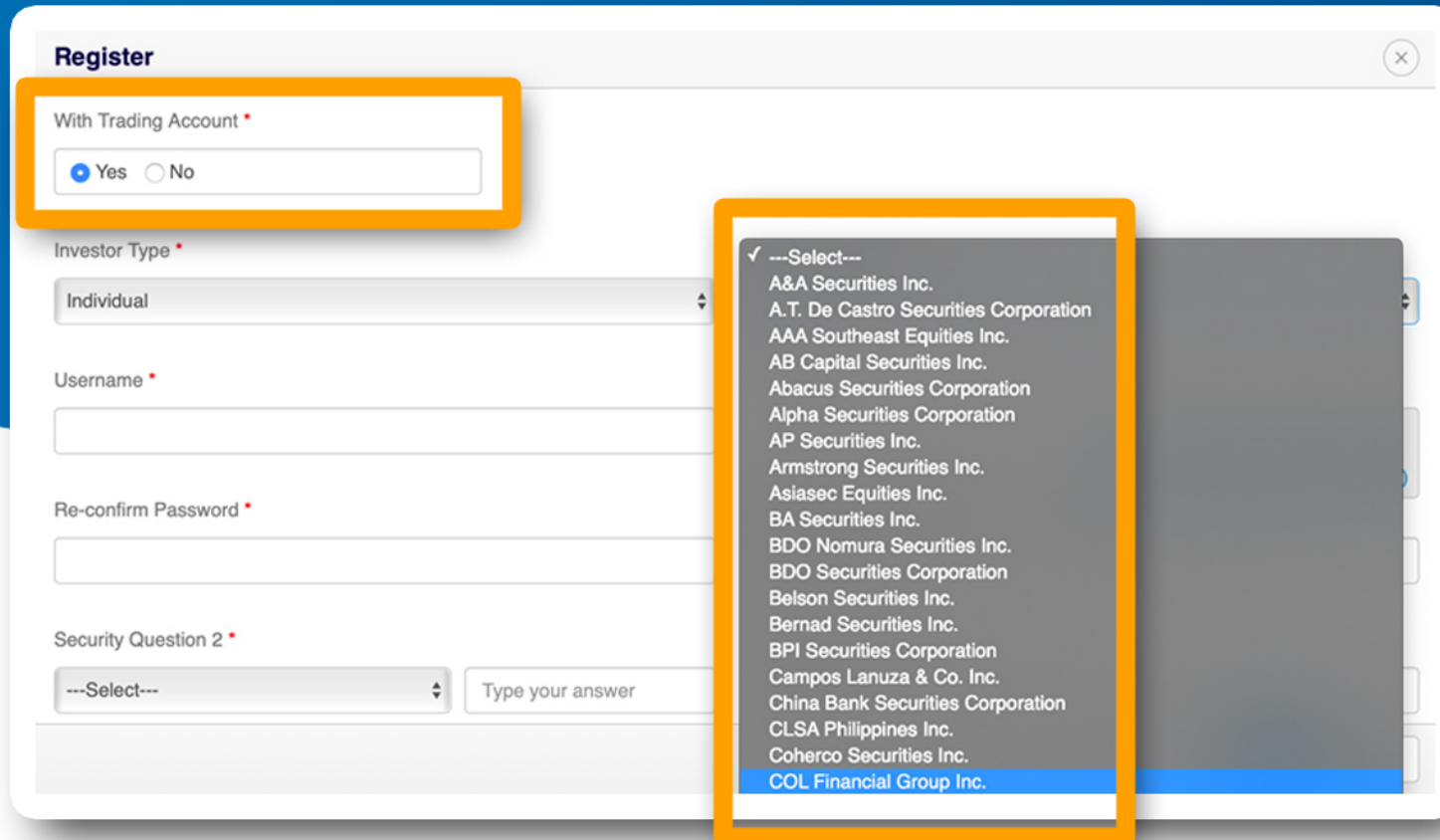
You can order as much as P100,000 worth of IPO shares, allowing you to take advantage of this potential investment opportunity.

And because it's online, ordering IPO's is so convenient and easy.

STEP 1: Register

Go to the **PSE EASy website** <https://easy.pse.com.ph>

To proceed, you will be asked if you have a Trading Account (or broker).
Click Yes, and choose COL Financial Group, Inc from the dropdown banner.



The screenshot shows the 'Register' form on the PSE EASy website. Two orange boxes highlight specific areas: the 'With Trading Account' section and the 'Investor Type' dropdown menu. The 'With Trading Account' section has the 'Yes' radio button selected. The 'Investor Type' dropdown is open, showing a list of brokers with 'COL Financial Group Inc.' highlighted at the bottom.

Register

With Trading Account *

☒ Yes ☐ No

Investor Type *

Individual

Username *

Re-confirm Password *

Security Question 2 *

---Select---

Type your answer

---Select---

- ✓ ---Select---
- A&A Securities Inc.
- A.T. De Castro Securities Corporation
- AAA Southeast Equities Inc.
- AB Capital Securities Inc.
- Abacus Securities Corporation
- Alpha Securities Corporation
- AP Securities Inc.
- Armstrong Securities Inc.
- Asiasec Equities Inc.
- BA Securities Inc.
- BDO Nomura Securities Inc.
- BDO Securities Corporation
- Belson Securities Inc.
- Bernad Securities Inc.
- BPI Securities Corporation
- Campos Lanuza & Co. Inc.
- China Bank Securities Corporation
- CLSA Philippines Inc.
- Coherco Securities Inc.
- COL Financial Group Inc.

STEP 1:

Register

Type or select the required information.

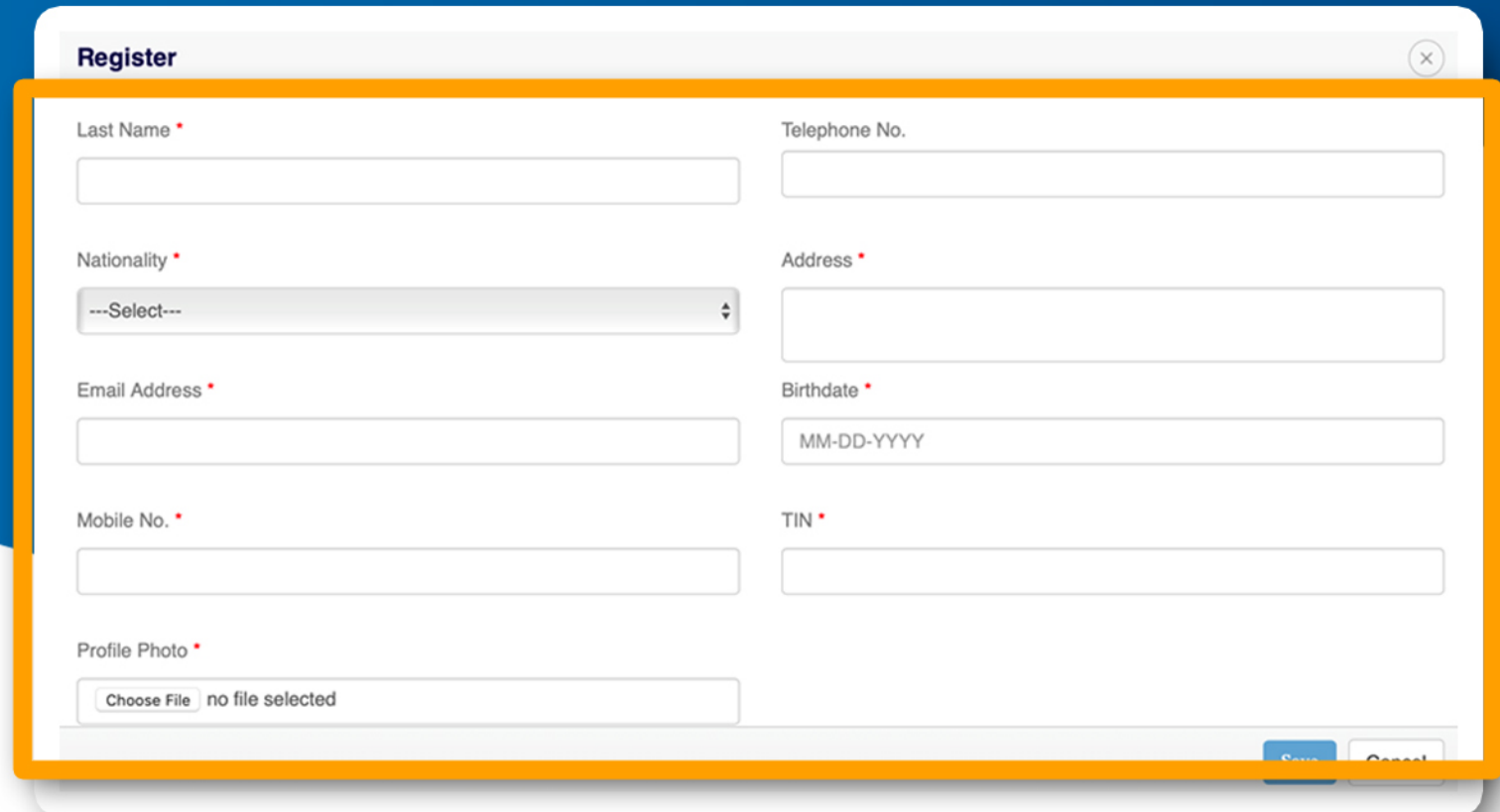
Best to have your TIN number and a digital file of your photo ready.

IMPORTANT:

Make sure all the details in PSE EASy EXACTLY MATCH details in your COL account, particularly your COL registered name, TIN, birthday and email.

For example, if you have a suffix (Jr, Sr), second name or you used your maiden or married name in COL, make sure to use the same details in PSE EASy.

(To check your COL details, log in to COL and go to 'Change Profile' in the Home tab.)



The screenshot shows a web form titled "Register" with a close button (X) in the top right corner. The form contains the following fields:

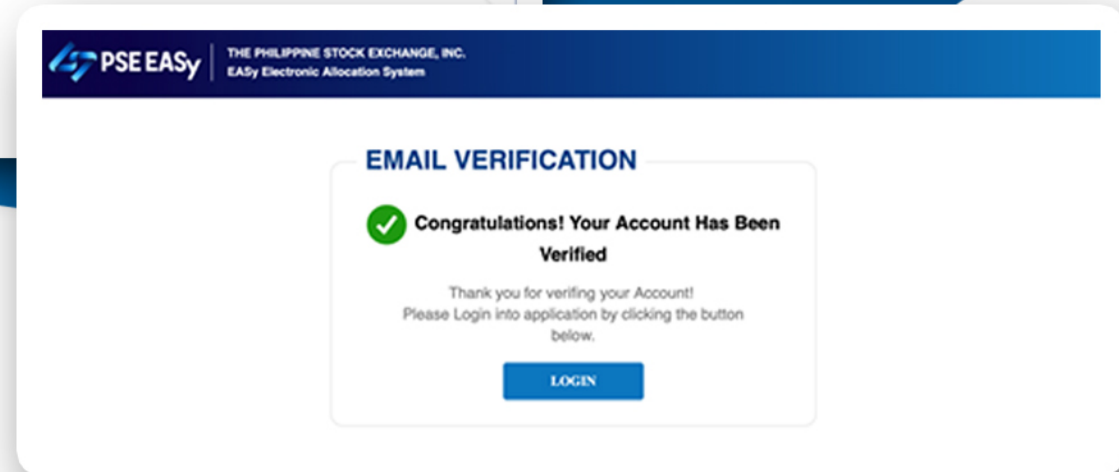
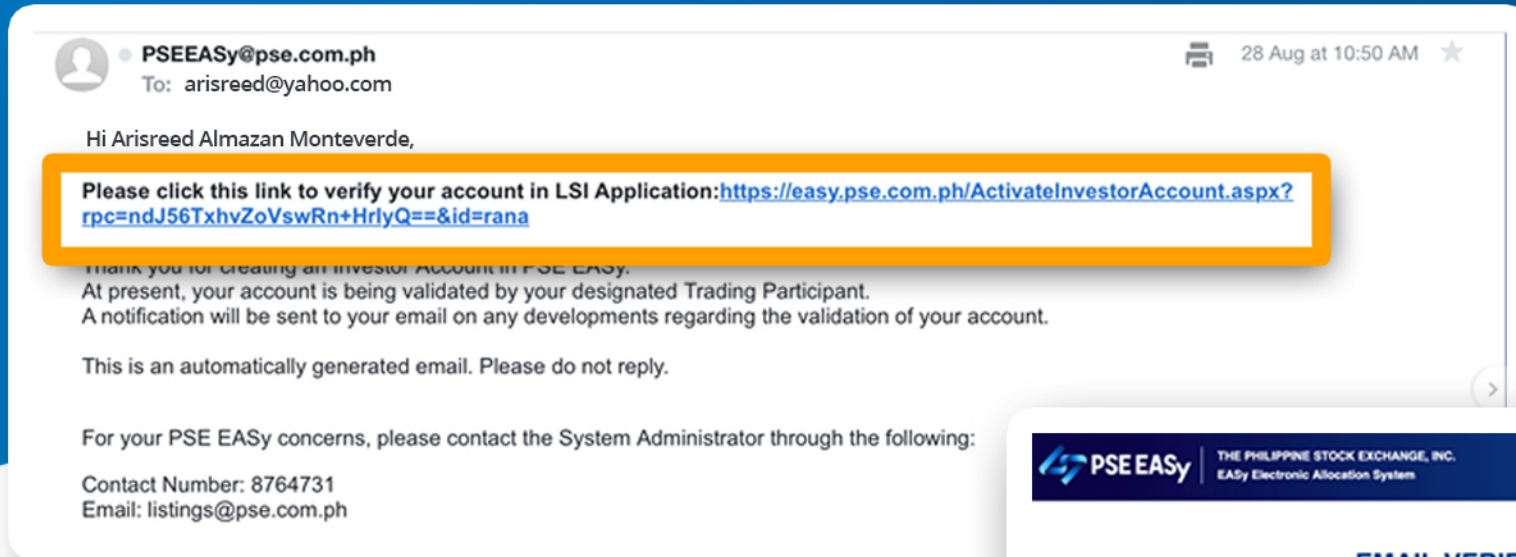
- Last Name ***: A text input field.
- Nationality ***: A dropdown menu with "--Select--" as the selected option.
- Email Address ***: A text input field.
- Mobile No. ***: A text input field.
- Profile Photo ***: A file upload area with a "Choose File" button and the text "no file selected".
- Telephone No.**: A text input field.
- Address ***: A text input field.
- Birthdate ***: A text input field with a placeholder "MM-DD-YYYY".
- TIN ***: A text input field.

At the bottom right of the form, there are two buttons: "Save" (in blue) and "Cancel".

STEP 2:

Validate

Click the verification link emailed by PSE



STEP 2: Validate

After 1 to 2 business days, you will receive a reference number from COL. Log-in to your COL account (up to you which COL account to use if you have several COL accounts), go to Change Profile and enter the reference number. You must do this within two (2) weeks, otherwise you will not be validated.

NOTE:

Only one (1) PSE EASy account per person is allowed, even if you have multiple COL accounts. Please refrain from applying for several PSE EASy accounts.

Dear Arisreed Almazan Monteverde

We have received your request for validation for your PSE EASy Account. To complete the validation process, please login to your COL account and follow these steps:

1) On the homepage, under Change Profile, click the Edit button of the PSE EASy Reference Number and enter this reference number:

4622029750

- 2) Enter your password and click validate button
- 3) Review the PSE EASy Reference Details that is displayed
- 4) Click OK then CLOSE

Should you need more information or guidance,
[click here to see our step-by-step guide.](#)

COL FINANCIAL
PHILIPPINES

PSEI	ALL	FIN	IND	HLDG	PRO	SVC	M-O	Trades	Value	Market
0.00	0.00%	0.00%	0.00%	0.00%	0.00%	0.00%	0.00%	0	0	Pre-Open...

Home Quotes Trade Research StreetSmart Mutual Fund Aug. 30 9:04
Service Inquiry Products Forms FAQs Investor Relations
My Settings Change Profile Downloads Important Info Privacy Policy Security Contact Us Site Search

PSE EASY REFERENCE DETAILS

Please enter the emailed PSE Easy Reference Number.

Account Number: **1000-0000**
Account Name: **MONTEVERDE, ARISREED 2 A.**

PSE Easy Reference Data

Enter Number	Enter Your Password
4622029750

Validate Cancel

STEP 2:

Validate

After 1 to 2 business days, you will receive an email from PSE that COL has validated your account. Then, it will reflect in your COL account as 'Validated'.

